

# Simplifying automated DVB Recording with DVB Cruise Logger

## TARA Systems

DiVi

September 2009

The DVB Cruise Logger enables the automated mobile DVB recording without technical knowledge and simplifies the creation of DVB transport stream test collections while travelling abroad.

Manufacturers of DVB receivers often need up-to-date collections of DVB transport streams from all over the world, in order to verify the correct behaviour of their products. The DVB Cruise Logger is intended for comfortable and cost-effective automated recording of these DVB-S, -S2, -C and -T transport stream files on a regular PC, Laptop or Netbook without specialized equipment and special technical knowledge.

At the push of a button, the DVB Cruise Logger software automatically records samples of selected frequencies, based on typical default frequency lists. In case of DVB-T recordings, the files can additionally be tagged with the current GPS coordinates to enable the later localization. The robust and easy-to-use software is suited for developers and engineers in field tests and laboratories, but also for non-technical staff, salesmen and trainees travelling abroad. In addition to the recording software, TARA distributes suitable small, lightweight DVB receiver boxes and a GPS mouse, which can be connected to PC, Laptop and Netbook via USB.

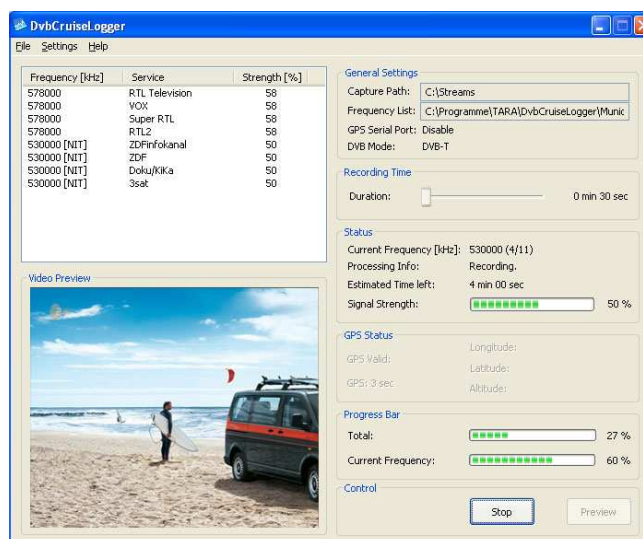
- Output: DVB transport stream files and optional KML files with GPS positions for e.g. Google Earth for each frequency.



The DVB Cruise Logger software is available as bundle with either USB DVB-T diversity tuner & GPS. or USB box with DVB-T/C or DVB-S1-S2.

### Easy Recording in 4 steps

1. Connect DVB receiver hardware and GPS mouse (optional) via USB
  2. Start DVB Cruise Logger Software
  3. Select frequency list; the default frequency list contains typical frequencies for Europe and can be modified to include or exclude further frequencies
  4. Start recording: complete DVB transport streams of all available frequencies are stored, including all available data, e.g. DVB-SI, Teletext and encrypted content
- Automatic NIT scan (Network Information Table) will detect all further available frequencies
  - See video preview – if available
  - Fast channel scan for preview (optional)



The DVB Cruise Logger software during recording

Further Information: [www.tara-systems.de/divi](http://www.tara-systems.de/divi)

„Excellence in Embedded CE Software“

TARA Systems, Gmunder Str. 53, 81379 Munich, Germany  
[www.tara-systems.de](http://www.tara-systems.de), Phone: +49 89 74 71 21 -0

